



LATEX 2000 - Innovation Meets Tradition

Latex Separator



LATEX 2000 Separator

Tradition

Having sold separators for decades to the latex industry, Alfa Laval have established a great deal of experience. The LATEX 2000 makes use of known formulas of the past, combining features that made the LRB 510 reach high efficiencies with those that made the LRH 410 highly stable and reliable.

Innovation

We want to make sure that the latex industry can benefit from some of the latest developments in the area of separator design. The LATEX 2000 comes with Alfa Laval's Centrilock™ Lock Ring. You can read more in this brochure on this revolutionary snap in lock ring design.

Presence

Based in all the major latex concentrate producing countries in the world, Alfa Laval is more than an equipment supplier. Our strategically placed resources, will help you generate cost savings through the efficient management of your maintenance.

Our customers can make use of our worldwide network of service workshops and distribution centres. *Fast guaranteed service, expert advice, supply of genuine spare parts or customized total service contracts* are just some of the services we have to offer. Our commitment does not end at the moment we hand over the machine to you after commissioning. That's when it starts!



The LATEX 2000 installed amidst a battery of LRB 510 separators

Application

The LATEX 2000 is used for the concentration of field latex.

Working principle

The LATEX 2000 centrifuge is a disc-stack solids-retaining concentrator.

Inside the bowl, field latex is split into two fractions: the heavy phase or skim and the light phase or cream. Separated solids accumulate at the inside surfaces of the bowl and distributor walls, forming layers that are removed manually at intervals. A magnetic break reduces the time required for stopping the bowl for cleaning.

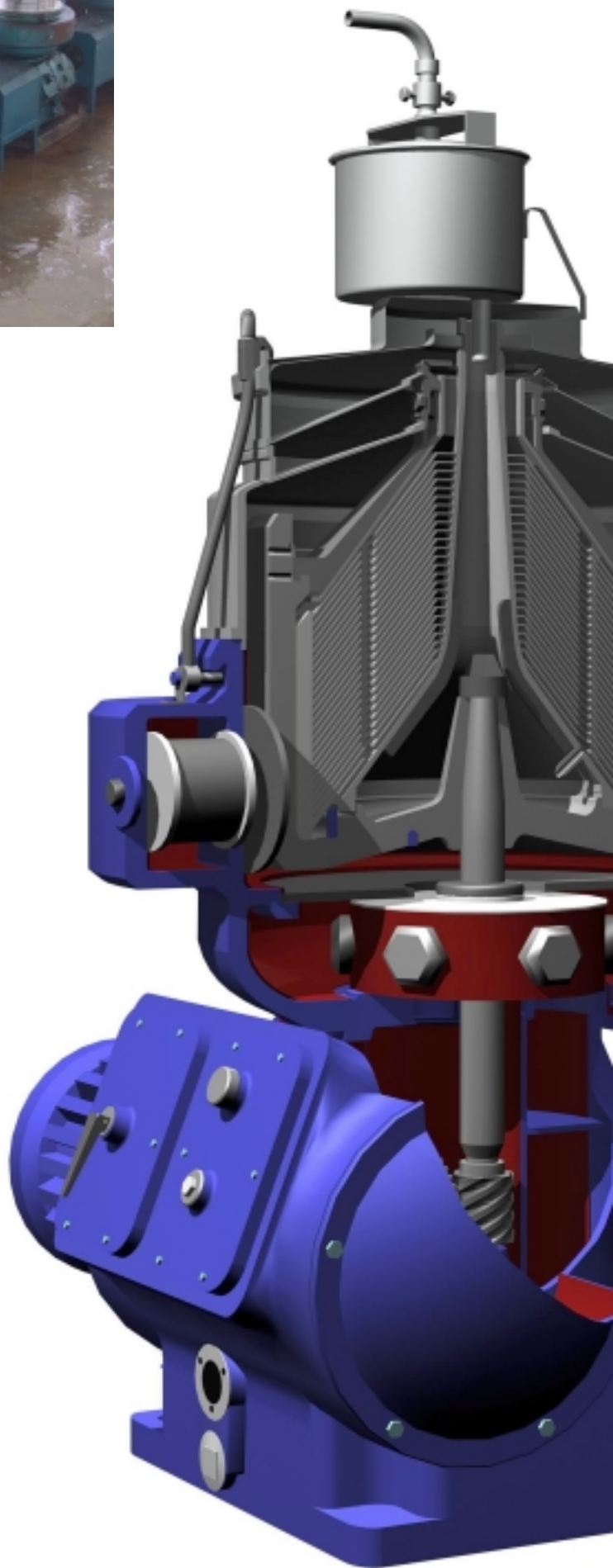
Comes with a proven track record

Even though the LATEX 2000 is new in the market, Alfa Laval has been a long-term partner to the latex industry.

Over 1000 LRB 510 separators have been sold the past ten years to customers in Thailand, Malaysia, Indonesia, Vietnam, Sri Lanka, India, Africa and Central America.

More than 1000 LRH 410 separators have been sold well before and are in most cases still in daily operation in latex concentrate factories all over the world.

The design of the LATEX 2000 is building on the experience gained from these installations.





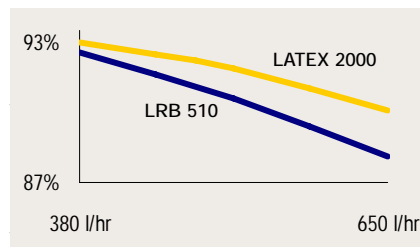
Innovation - The Centrilock™ lock ring having been removed from its guide.



Tradition - the LATEX 2000 cover set with its reinforced arm design

High capacity and high efficiency

Compared to the LRB 510, the LATEX 2000 has a higher separation surface. In addition, sludge holding space under the distributor and in the periphery of the bowl body has been increased. In side-by-side tests, the efficiency of the LATEX 2000 compared to the LRB 510 is on average 2% higher when running at the same capacity. Capacities of 650 litres/hour can be easily obtained, with efficiencies in excess of 90%.



LATEX 2000 is the Centrilock™ lock ring. With this revolutionary snap in lock ring design, cleaners can open and close the bowl in seconds without hammering. We got away completely with the old lock ring, that was prone to wear and expensive to replace.

Direct drive with frequency inverter

The LATEX 2000 comes with a direct drive, no friction clutch is required. This results in less maintenance and fewer spare parts to stock and replace. A frequency inverter is part of the standard supply. Savings in power consumption in excess of 10% are obtained in comparison with the standard star-delta starter. Furthermore, start-up time is reduced to less than 8 minutes.

No guide lug

The LATEX 2000 bowl no longer needs a guide lug on the bowl hood. It is faster to position the hood back on the bowl and there is no risk of damage.

Reliability

Frequent cleaning intervals, put a heavy stress on latex separators. The LATEX 2000 has been designed to offer maximum reliability under these demanding conditions.

Sturdy cover design

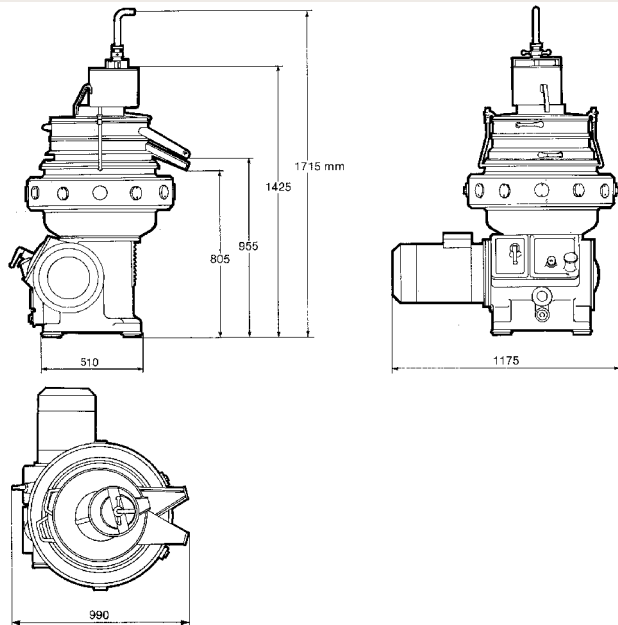
More resistant to wear and damage, the sturdy cover set supplied with the LATEX 2000 will enjoy a long lifetime. We have also reinforced the side arms that keep the covers in place.

Stable bowl

The stability of the bowl has been optimised by the introduction of a shallow disk design.

Upgrading made possible

If you wish to benefit of all or some of the improvements that come with the LATEX 2000, it is possible to upgrade your current LRB 510. Ask your local Alfa Laval office for more information.



Capacity

LATEX 2000 up to 650 litres/hour with 90% efficiency*

Motor

11kW (standard motor)

Power consumption starting max 14 kW
running 8 kW

Running-up time 8 min

Stopping time 2 min with magnetic brake

Control

Frequency inverter

Materials

Bowl stainless steel

Covers stainless steel

Frame epoxy-enamelled cast iron

Bowl

Speed (50/60 Hz) 7269/7312 rpm

Weights

Nett weight 1,150 kg

Gross weight 1,400 kg

Volume 1.9 + 1.8 (bowl holder) m³

*based on results obtained at various sites in Thailand

PD 41396-1

How to contact Alfa Laval

Contact details for all countries
are continually updated on our website.
Please visit www.alfalaval.com to
access the information direct.